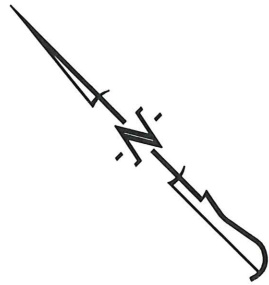


PLOT PLAN

LOT 230



SCALE: 1"=30'



230

14585 SQ. FT.
FF = 671.4
BF = 661.4

S 0°40'25" E 145.47'

N 71°09'55" E 150.59'

LEGEND:

- 1/2" IRON PIPE
- ⊙ PERMANENT MONUMENT
- (R) RADIAL LINE
- S— PROPOSED SANITARY SEWER
- PROPOSED LOCATION OF SEWER LATERAL
- (XXX.XX TC) PROPOSED TOP OF CURB EL. BASED ON DESIGN PLAN
- FF = XXX.X MINIMUM FINISHED FLOOR

DESCRIPTION:

LOT 230 OF THE GATES, PLAT NO. 2 & 3, RECORDED IN PLAT BOOK 49, PAGE 29, LOCATED IN COLUMBIA, BOONE COUNTY, MISSOURI.

I HEREBY CERTIFY THAT THE ABOVE LOT WAS SURVEYED UNDER MY DIRECTION. I FURTHER STATE THAT THE ABOVE LOT DOES NOT LIE WITHIN THE 100 YEAR FLOOD PLAIN AS ADOPTED BY THE CITY OF COLUMBIA, MISSOURI.

R= 150.00'
L= 3.70'
CH= N 21°26'25" W 3.70'
R= 225.00'
L= 54.10'
CH= N 15°15'30" W 53.97'

R= 20.00'
L= 25.87'
CH= N 45°25'55" W 24.11'

R= 150.00'
L= 61.60'
CH= S 79°44'35" E 61.17'

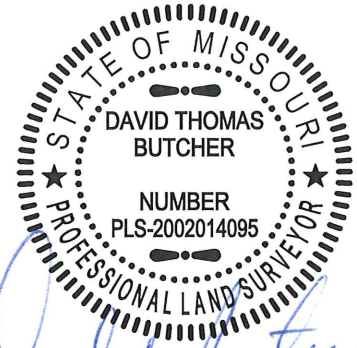
R= 210.00'
L= 53.20'
CH= S 75°14'05" E 53.06'

FAIRLEIGH CT.
(50' R/W)

RUDCHESTER CT.
(50' R/W)

25' BLDG. LINE
10' UTILITY ESMT

PREPARED BY:
CROCKETT
ENGINEERING CONSULTANTS
www.crockettengineering.com



David T. Butcher

DAVID T. BUTCHER, PLS-2002014095
3/2/2016
DATE